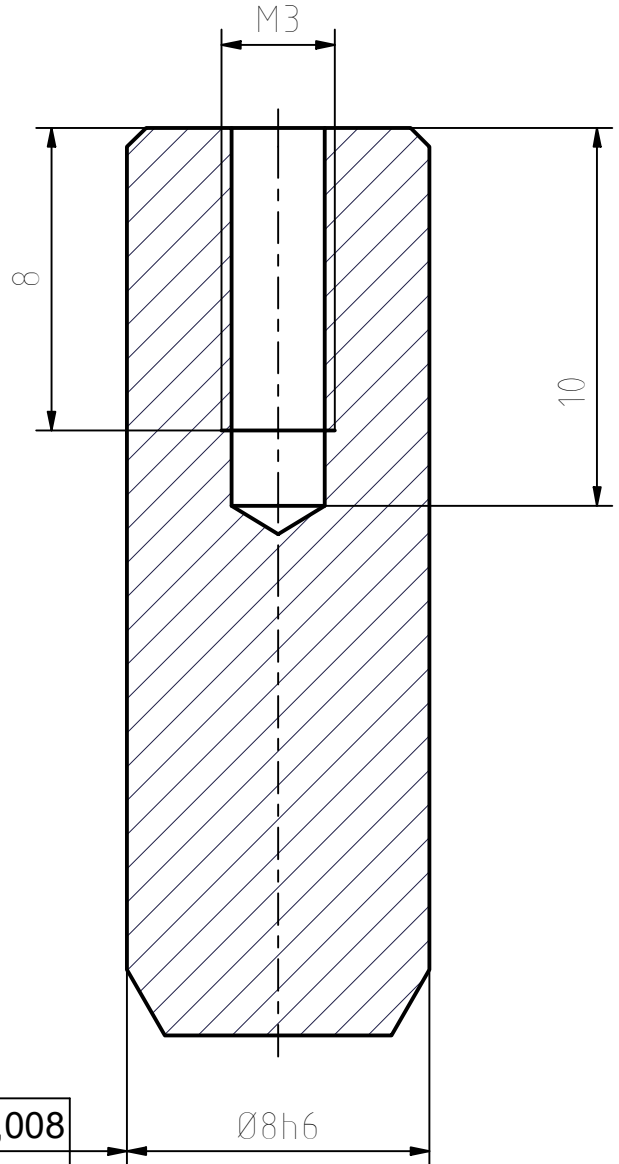
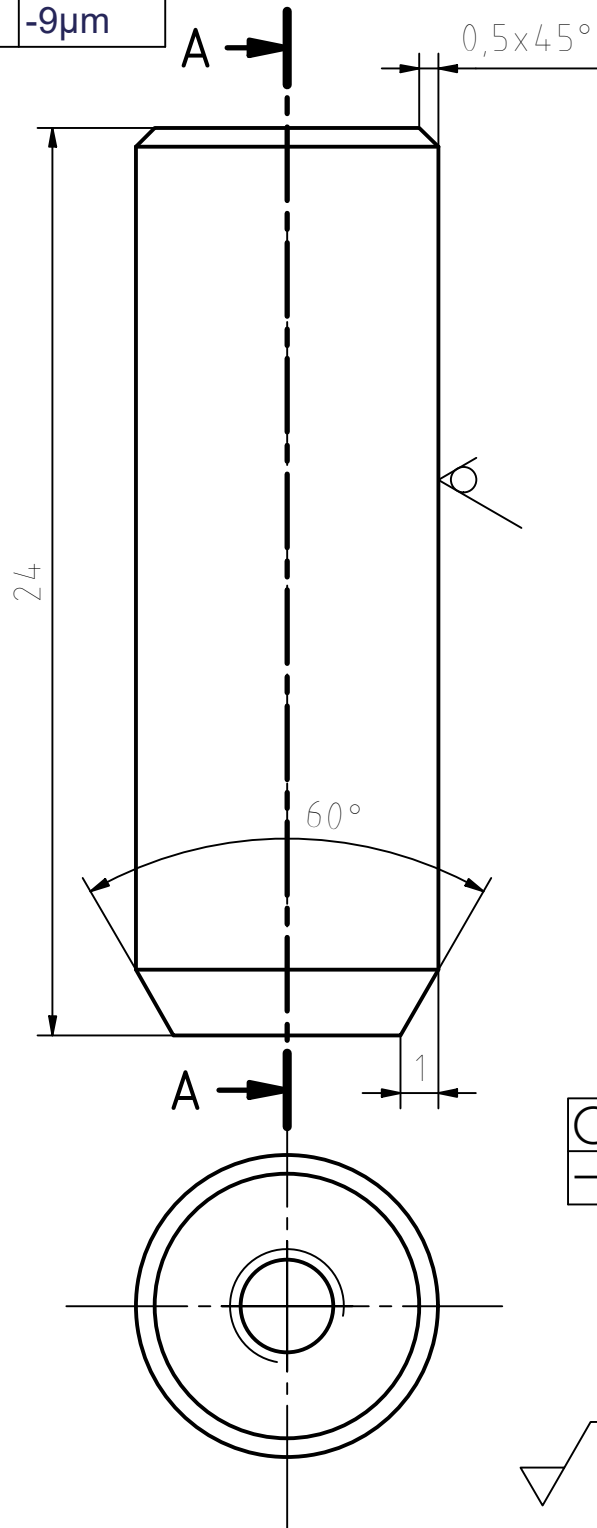
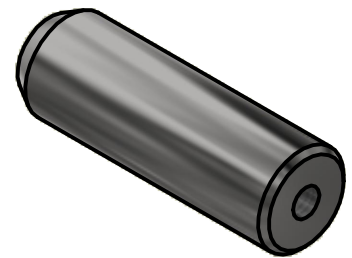
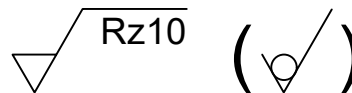


Passung	Abmaß
Ø8h6	0µm -9µm

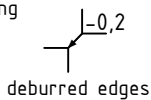
A-A (5 : 1)



○	0,008
—	0,008



geometric dimensioning
and tolerancing
DIN EN ISO 1101



workpiece edges
DIN ISO 13715



general tolerances
DIN ISO 2768-f/H
surfaces
DIN ISO 1302

amount: 4

scale: 5 : 1

material: 1.4305

pre-product: 8h6 (grinded)

rev.	alteration	date	name	date	name
				designed: 26.08.2019	T.Kanngießer
				approved: 28.05.2020	Kanngießer
				status:	released
				part rev.: 1.0	draw. rev.: A
				Georg-August-Universität Göttingen	
				2.Physikalisches Institut	
				Friedrich-Hund-Platz 1	
				D-37077 Göttingen	
				Tel.: 0551 3927625	
				Fax.: 0551 3924493	

Guide Rod

part number: ITPT.03.00.004

field of application: ITkPix Tool
project: Atlas

sheet
1/1
A4